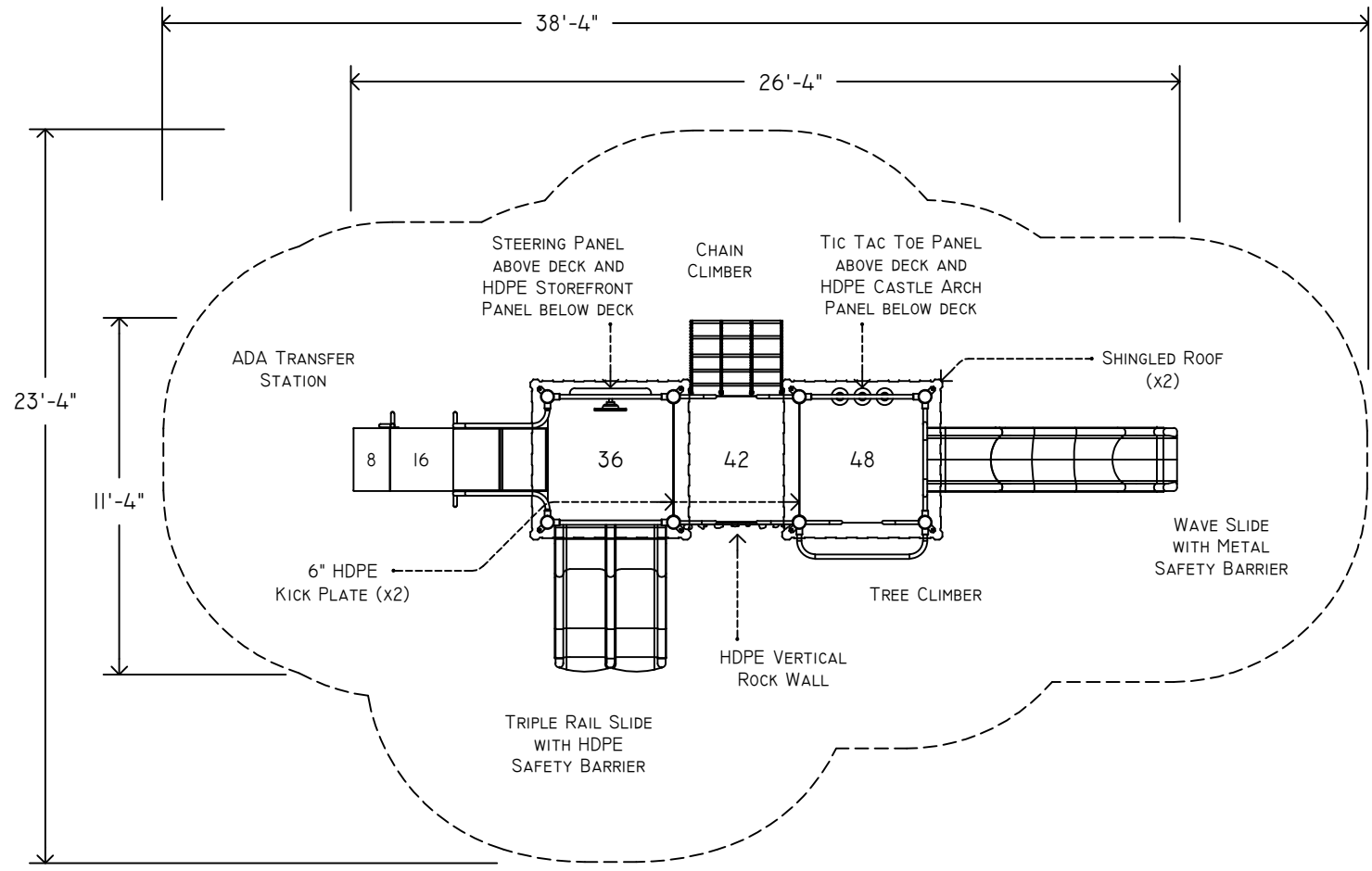


AN ENERGY ABSORBING PROTECTIVE SURFACE MATERIAL IS REQUIRED UNDER AND AROUND THIS PLAY STRUCTURE

FINAL REVISIONS				
ZONE	REV.	DESCRIPTION	DATE	APPROVED:



ADVENTURE  
PLAYGROUND SYSTEMS, INC.

N/A

APS9ADA-08  
PLAY STRUCTURE

ELEVATED COMPONENTS: 2  
GROUND LEVEL COMPONENTS: 2  
AGE GROUP: 5 TO 12

ADA COMPLIANCE

MIN "FALL ZONE": 23'4" x 38'4"  
MAX FALL HEIGHT: 48"  
APPROX. WEIGHT LIMIT : N/A  
APPROX. SQ FT: 655'  
APPROX. PERIM: 98'5" (LINEAR FT)

DATE: 09-05-15  
DRAWING BY: J.O

DRAWING NO: A001  
REVISION NO: A/000

TO PROMOTE PROPER USAGE BY CHILDREN, A SAFETY SIGN IS RECOMMENDED AT EACH MAIN ENTRY POINT OF THE PLAY STRUCTURE. THIS IS TO INFORM CAREGIVERS THE APPROPRIATE AGE LEVEL AND RULES FOR THIS EQUIPMENT.